

MAIN FIGURE						
DATA			CO-ORDINATES			
Sides	metres	Angles of Direction	System: 22/17 Y metres X	metres	Design.	
			Constants=0,00	+0,00		
A B	240,15	303 51 20	A	-8351,39	48220,61	E
B C	20,44	21 56 20	B	-8550,82	48354,40	7A
C D	145,76	15 32 00	C	-8543,15	48373,34	7X7
D E	139,35	19 09 50	D	-8504,12	48513,78	7X5
E F	15,00	66 02 10	E	-8458,37	48645,41	7X4
F G	107,95	94 36 00	F	-8444,67	48691,49	7X3
G H	141,91	101 57 40	G	-8337,07	48642,84	L
H J	15,06	120 54 50	H	-8198,25	48613,43	M
J K	100,00	205 53 10	J	-8185,33	48605,69	N
K L	25,09	200 11 00	K	-8228,99	48515,72	A126
L M	196,61	198 55 30	L	-8237,64	48492,18	A124
M N	22,88	210 47 20	M	-8301,41	48306,19	A50
N P	51,90	214 03 30	N	-8313,12	48286,54	A48
P Q	7,07	169 03 30	P	-8342,19	48243,54	A17
Q A	19,15	213 24 40	Q	-8340,85	48236,59	A16

CO-ORDINATES			CO-ORDINATES			CO-ORDINATES		
BLOCK CORNERS			BLOCK CORNERS			REFERENCE MARKS		
A18	-8354,61	48251,94	A100	-8463,81	48472,45	RM6	-8357,85	48250,87
A19	-8361,56	48250,59	A101	-8363,05	48464,35	RM9	-8294,95	48375,85
A20	-8429,96	48296,84	A102	-8365,22	48449,47	RM11	-8253,30	48500,38
A21	-8431,30	48303,78	A103	-8279,61	48431,33	RM13	-8423,78	48600,57
A22	-8442,07	48311,06	A104	-8276,34	48425,57	RM14	-8470,82	48456,07
A23	-8449,02	48309,72	A105	-8274,71	48445,63	RM15	-8501,68	48347,07
A24	-8499,72	48343,99	A106	-8268,19	48449,32			
A25	-8502,53	48351,61	A127	-8251,83	48497,04			
A26	-8515,63	48360,47	A128	-8255,10	48502,81			
A27	-8521,11	48358,45	A129	-8243,29	48520,60			
A30	-8494,70	48379,72	A130	-8250,37	48517,14			
A31	-8488,38	48384,14	A131	-8354,39	48523,84			
A32	-8487,93	48404,08	A132	-8352,23	48538,72			
A33	-8484,29	48398,86	A133	-8445,31	48531,16			
A34	-8373,88	48389,97	A134	-8451,94	48526,84			
A35	-8376,04	48375,10	A135	-8461,14	48500,35			
A36	-8304,11	48359,86	A137	-8440,23	48545,80			
A37	-8300,84	48354,09	A138	-8443,57	48550,92			
A38	-8299,21	48374,16	A139	-8439,88	48607,22			
A39	-8292,70	48377,85	A140	-8421,45	48619,53			
A40	-8427,08	48333,24	A141	-8427,36	48597,54			
A41	-8420,00	48320,50	A142	-8417,46	48604,16			
A42	-8382,11	48334,94	A143	-8341,40	48613,09			
A43	-8384,39	48321,85	A144	-8343,57	48598,21			
A44	-8328,43	48299,40	A145	-8223,38	48572,75			
A45	-8326,59	48293,39	A146	-8220,67	48567,22			
A46	-8321,08	48310,46	A147	-8216,63	48586,65			
A47	-8314,62	48313,32	A148	-8209,56	48590,32			
A48	-8474,23	48453,32	C140	-8469,43	48522,21			
A49	-8467,91	48457,73	C141	-8474,55	48508,11			
A98	-8467,45	48477,67						

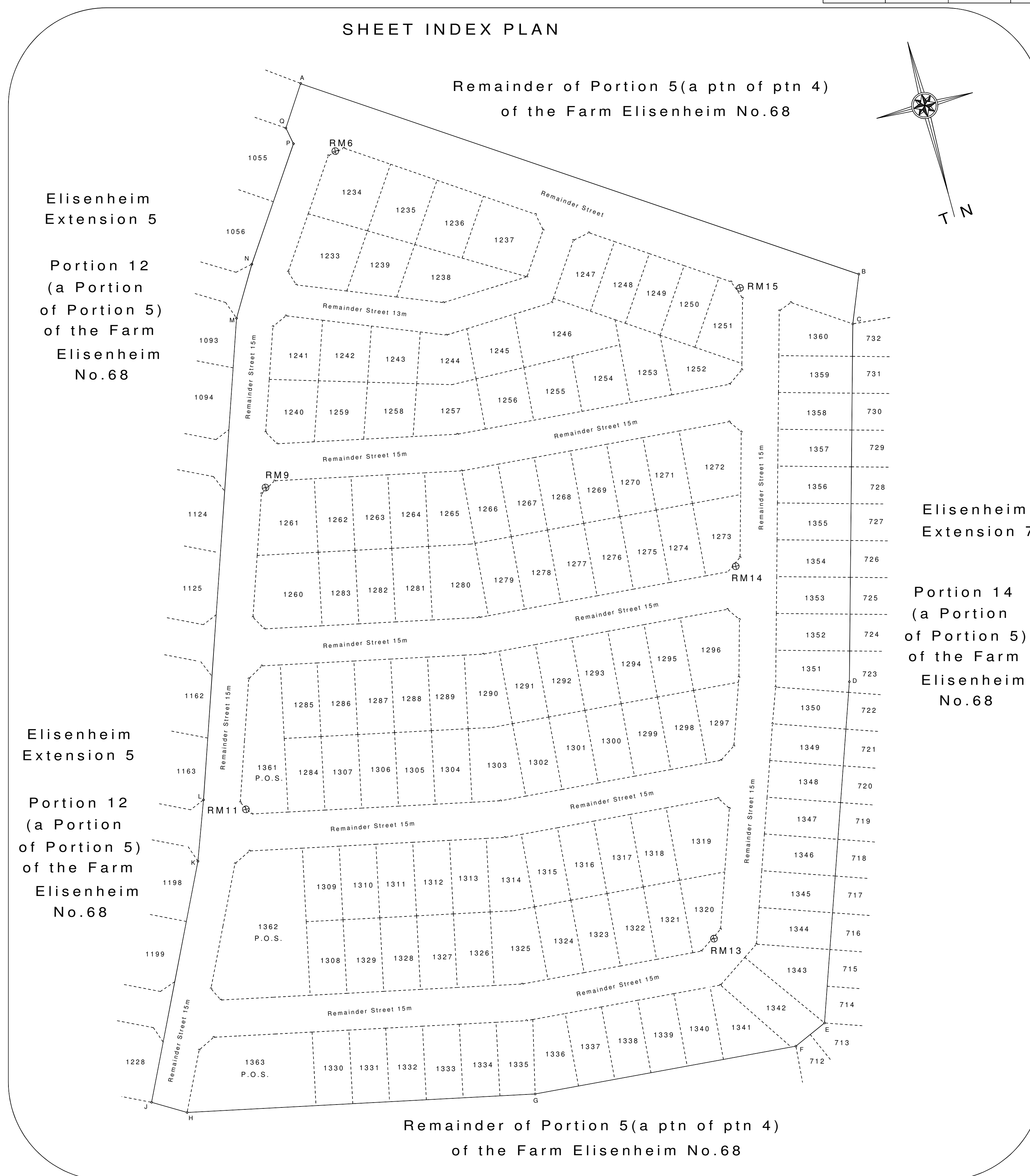
BEACON DESCRIPTION
 All Beacons.....16mm round iron Peg
 RM6, RM9, RM11, RM13, RM14 and RM15.....16mm round iron peg in concrete under ground

SHEET 1
GENERAL PLAN K419
 CONSISTING OF 2 SHEETS
ELISENHEIM EXTENSION 6
 COMPRISING 131 ERVEN
 NUMBERED 1233 - 1360 AND
 (3 PUBLIC OPEN SPACES
 NUMBERED 1361 - 1363)
 AND REMAINDER (STREETS)
 SITUATE ON PORTION 13 (A PORTION OF PORTION 5)
 OF THE FARM ELISENHEIM No.68
 VIDE DIAGRAM No. 337/2015 annexed No.T
 MUNICIPAL AREA OF WINDHOEK
 REGISTRATION DIVISION K
 KHOMAS REGION
 REPUBLIC OF NAMIBIA
 Scale 1:1000

Surveyed in May 2015 by me
 Land Surveyor
 H.L. Strydom

AREAS		AREAS		AREAS		AREAS			
Erf number	Square metres	Erf number	Square metres	Erf number	Square metres	Erf number	Square metres	Erf number	Square metres
1233	690	1260	788	1287	450	1314	489	1341	485
1234	725	1261	678	1288	450	1315	450	1342	634
1235	564	1262	450	1289	450	1316	450	1343	601
1236	543	1263	450	1290	488	1317	450	1344	450
1237	699	1264	450	1291	450	1318	450	1345	450
1238	676	1265	512	1292	450	1319	667	1346	450
1239	465	1266	450	1293	450	1320	417	1347	450
1240	502	1267	450	1294	450	1321	450	1348	450
1241	500	1268	450	1295	450	1322	450	1349	450
1242	476	1269	450	1296	637	1323	450	1350	448
1243	440	1270	450	1297	429	1324	450	1351	477
1244	449	1271	450	1298	450	1325	605	1352	450
1245	429	1272	674	1299	450	1326	450	1353	450
1246	789	1273	500	1300	450	1327	450	1354	450
1247	469	1274	450	1301	450	1328	450	1355	450
1248	450	1275	450	1302	450	1329	450	1356	450
1249	450	1276	450	1303	604	1330	450	1357	450
1250	450	1277	450	1304	450	1331	450	1358	450
1251	445	1278	450	1305	450	1332	450	1359	450
1252	472	1279	450	1306	450	1333	450	1360	535
1253	502	1280	628	1307	450	1334	450	1361(POS)	947
1254	467	1281	450	1308	450	1335	441	1362(POS)	2013
1255	447	1282	450	1309	450	1336	471	1363(POS)	1453
1256	426	1283	450	1310	450	1337	450		
1257	560	1284	450	1311	450	1338	450		
1258	448	1285	450	1312	450	1339	450		
1259	482	1286	450	1313	450	1340	450		

ENDORSEMENTS				
This plan has been amended as follows				
No.	Amendment	Authority	Date	Initialled



FILE No. ELH.A/6
 S.R. No. E133/2015
 COMP.:MG-3CC/V4,W4